

Cloud RO delivers clean, alkaline drinking water in a compact, user friendly design. Cloud's filtration technology leverages internal sensors to control pressure and flow, **delivering top of the line filtration performance, a remarkably low 1:1 waste ratio, and 2x faster flow at the faucet than competitors.**

Cloud RO connects to the Cloud app to report real-time water quality and track household consumption trends. Cloud isn't just different, Cloud is better. Continue reading to learn more.



TL;DR Summary

Here at Cloud we are big fans of specificity. We have a brief summary of features below, but if you enjoy geeking out on this stuff, we have provided a mountain of technical details in the pages that follow. Enjoy!

FILTRATION TECHNOLOGY

Multi-stage reverse osmosis filtration with an integrated alkaline post filter. The post filter adds calcium, magnesium, potassium, sodium and trace minerals. These healthy minerals naturally elevate the pH, leaving the water alkaline.

SENSOR DATA

Internal sensors track and report TDS data at each stage of filtration so the customer can confirm that the filter is working and minerals are effectively being added. Integrated pressure sensors track water consumption and tank volume to improve RO efficiency and maximize faucet flow rate.

REPLACEMENT FILTERS

Unlike traditional RO systems, Cloud only ships filters when you need them. Water quality data is reported to the Cloud app and replacements are triggered based on filter health. Once your replacements arrive, Cloud's unique modular design allows you to easily change the filters on your counter top instead of breaking your neck under your kitchen cabinet.

-  8 Filtration Stages Remove Thousands of Contaminants
-  Smart Sensors Track Performance
-  Usage Based Filter Replacements
-  1 Year Money Back Guarantee

Performance Specifications

Cloud offers best in class filtration performance while also delivering a low waste ratio and powerful flow at the faucet. We don't like trade offs so we worked tirelessly to jam as many features into a compact design as we could. An integrated, non-electric, permeate pump lives in the system base improving the tank fill time by 400%. The hydraulic pump also controls back pressure delivering 80% improvement in waste ratio when compared with traditional RO systems.

In addition Cloud leverages a dedicated solenoid valve on the inlet port that dynamically controls system pressure. The valve lets water into the system as the tank empties and shuts off water flow when the tank reaches an optimal volume. This patent pending technology provides an increased faucet flow rate, while also eliminating the TDS creep issue experienced in tankless RO systems.

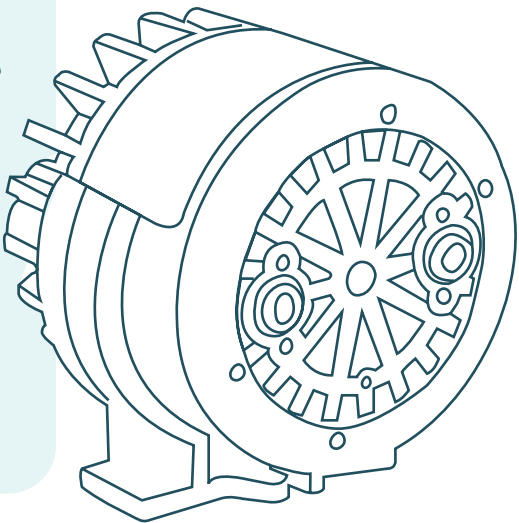
Certification	NSF 58 Certification (In-Progress) Third-Party tested to NSF 42 and 58 Standards
TDS Rejection Rate	>95%
Outlet Pressure	45 psi
Faucet Flow Rate	0.5-0.75 Gallons Per Minute (GPM)
RO Membrane Production Rate	80 Gallons Per Day (GPD)
Waste Water Ratio	1:1
Max Operating Pressure	120 psi
Max Operating Temperature	95 Degrees Fahrenheit
Tank Volume	2.8 Gallons

THE POWER OF PERMEATE

An integrated non-electric 'permeate pump' uses the stored pressure of RO waste water to pump pure permeate water into the Cloud storage tank. The result? 400% faster tank fill time, improved TDS reduction rates, a shockingly low 1:1 waste ratio, and high pressure at the faucet.

KEEP IT COOL

Cloud is one of the only RO systems available with adequate pressure to connect to a fridge or ice maker right out of the box.

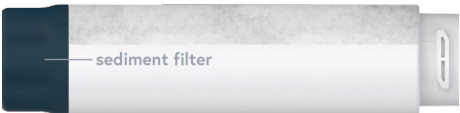


Filter Specs

8 filtration stages packed into 4 easy to change cartridges. Each filter stage uses top of the line materials and has been tested against stringent NSF standards. A long lasting battery pack is also included and replaced alongside the filter cartridges.

Sediment Filter | Stage 1

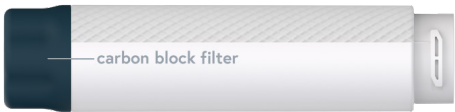
This 5 micron polypropylene filter traps dirt, rust and larger particles suspended in your tap water. Think of this filter stage like a coffee filter, any large particles get caught up and the water passes through to the next filtration stage.



5 Micron Filtration	Advanced Polypropylene	Long Lasting Construction	NSF 42 Standard
---------------------	------------------------	---------------------------	-----------------

Carbon Block Filter | Stage 2-3

This 2 in 1 cartridge features an activated coconut carbon block as well as anti-scale media that extends RO membrane life. The 1 micron pore size and high surface density of the block ensures maximum contact time and eliminates the potential for channeling seen in GAC alternatives.



1 Micron Filtration	Activated Coconut Carbon	Anti-scale Media	NSF 42 Standard
---------------------	--------------------------	------------------	-----------------

Reverse Osmosis Membrane | Stage 4

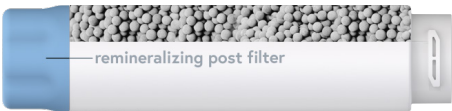
The NSF 58 certified RO membrane eliminates thousands of potential contaminants. The membrane strips the water down to its purest form and sends the toxins packing down the drain pipe. Our RO membrane is rated for 80 GPD production with a 1:1 waste ratio.



96% TDS Rejection Rate	1:1 Waste Ratio	Dow Filmtech Technology	NSF 58 Standard
------------------------	-----------------	-------------------------	-----------------

Remineralization Post Filter | Stages 5-8

Our 4 in 1 remineralizing post filter features a blend of three different mineral medias that lower your water’s ORP, increase pH and add trace minerals like calcium, magnesium and potassium. In addition an integrated 1 micron carbon block post filter polishes the water before it reaches your glass.



7.5-9.5ph Alkaline Water	Negative ORP	Three Remin Medias	Coconut Carbon Block
--------------------------	--------------	--------------------	----------------------

Battery

The long-lasting battery pack powers all of the internal sensor tech that keeps your Cloud humming. This simple battery pack allows you to avoid complex electrical installation under your sink. A new battery pack is sent with your replacement filters, alongside a return label for easy recycling.



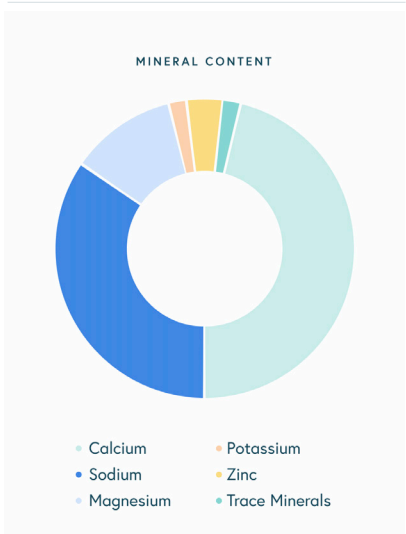
2+ Year Lifespan	Easy Drop-in Replacement	Non-hazardous	Alkaline Batteries
------------------	--------------------------	---------------	--------------------

Water Chemistry

Reverses osmosis works very well, some would argue it works too well, stripping the water of any healthy minerals and dropping the pH to sub optimal levels. We don’t disagree. Straight RO water tastes flat and boring and we believe in the benefits of mineralized water. Cloud’s proprietary mineral blend adds trace amounts of electrolytes to naturally raise the water’s pH, lower the ORP, and improve the taste. A quick snapshot is below.



Post RO pH	6-7
Post Remin pH	7.5-9.5
Post RO ORP	+200-300 mv
Post Remin ORP	-50-250 mv
Minerals Added	Calcium Magnesium Potassium Sodium Zinc Trace Minerals



Contaminants Removed

Cloud's powerful multistage filtration process removes thousands of drinking water contaminants including heavy metals, PFAS, fluoride, pesticides, pharmaceuticals, and more. The following list represents common drinking water contaminants removed by Cloud prior to remineralization.

	DISINFECTANTS	Chlorodibromomethane Bromochloroacetonitrile	Dichloroacetonitrile Chlorine	Chloramines Brxomodichloromethane (THM)
	BIOLOGICAL & PARTICULATE	Giardia Ameobic Protozoa	Sediment Turbidity Cysts	Bacteria Asbestos
	CHEMICALS	1,1,1-trichloro-2-propanone 1, 1-dichloroethylene 1,1,1-Trichloroethane 1,1,2-Trichloroethane 1,1,2,2-tetrachloroethane 1,1-dichloro-2-propanone 1, 2-dichloropropane 1, 2-dichloroethane 1,2,4-Trichlorobenzene 2,4,5-TP (Silvex) Arsenic Benzene Bisphenol A (BPA)	Bromoform Carbon Tetrachloride Chlorobenzene Chloroform cis-1, 2-dichloroethylene Dibromoacetonitrile Ethylbenzene Hexachlorobutadiene Hexachlorocyclopentadiene MTBE Nitrate/Nitrite Nonylphenol o-dichlorobenzene	p-dichlorobenzene PFOA & PFOS Styrene TCEP TCPP Tetrachloroethylene Toluene trans-1, 2-dichloroethylene Tribromoacetic Acid Trichloroacetonitrile Trichloroethylene Xylenes
	PESTICIDES	Chloropicrin 2,4-D cls-1, 3-dichloropropene DEET Dibromochloropropane (DBCP) Carbofuran	Atrazine Alachlor Dinoseb Endrin Ethylene Dibromide (EDB) Heptachlor (H-34, Heptox) Heptachlor Epoxide	Lindane Linuron Methoxychlor Metolachlor Pentachlorophenol Simazine
	PHARMACEUTICAL	Meprobarmate Atenolol Naproxen	Phenytoin Trimethoprim Ibuprofen	Estrone Carbamazepine
	HEAVY METALS	Barium Cadmium Chromium Hexavalent Chromium Trivalent	Copper Fluoride Lead Mercury	Radium Selenium Uranium
	INORGANIC CONTAMINANTS	Aluminum Bicarbonate Boron Calcium Chloride Chromate	Cyanide Iron Magnesium Manganese Nickel Phosphate	Potassium Radioactivity Silver Sodium Sulfate Zinc

Product Design

Stop grappling with hoses and canisters under your sink. Cloud's unique modular design not only saves space, it also allows you to change your filters outside of the kitchen cabinet. Flip the front lever down and voilà, the magazine pops off and all filter stages come right along with it. Oh, almost forgot the best part. You never have to worry about shutting off your water again, Cloud takes care of that too.

The Filters

Easy twist in, twist in/out filters and a drop in battery pack. When you release the Magazine all the filters come along with it so you can change the filters outside of your cabinet.

The Magazine

This big white canister, we call that the Magazine. It holds all of the filter cartridges. Lift the Magazine up and out of the cabinet when ready for a change, and simply place it back on when its ready to be re-installed. Pop-it valves at the base of the Magazine control any dripping and small peg feet help guide the Magazine back into place.

The Base

This is where the magic happens. We crammed as much sensor tech, an intricate manifold design and a permeate pump all in this tiny package. When installing the system all you need to install is the base, giving you plenty of room to work. The front lever controls an inlet solenoid valve so there is no need to shutoff your water. Once the Magazine is seated on the base, lever up, lets go, ready to flow.

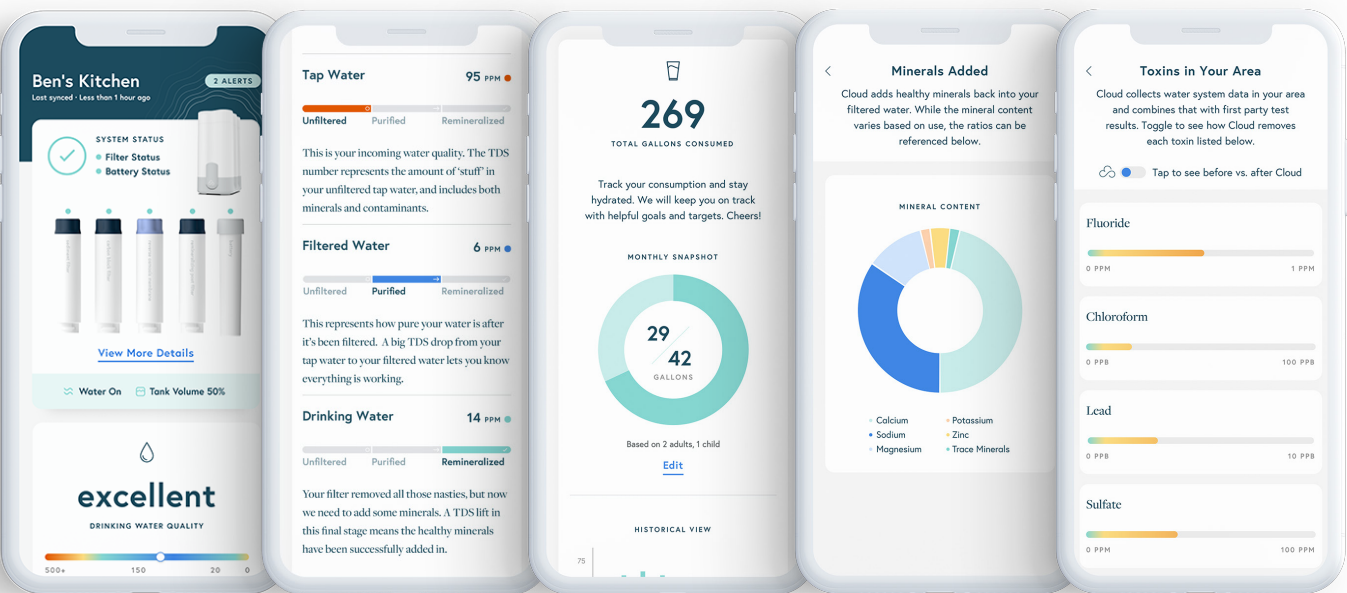
The Tank

Faster fill times and internal pressure controls allows Cloud to have a small 2.8 gallon tank, saving space in the cabinet. Our Tank is NSF certified and includes a mounted stand to improve stability.



App Features

Smart sensors test your water at every stage of filtration. TDS data is sent straight to the Cloud app so you can see your water quality in real-time. Track how much your family is drinking and how many plastic bottles you have saved. Keep tabs on your pH to ensure the water you are drinking is perfectly alkaline. Check out the toxins we kick to the curb and the nutrients we add to your glass. Your water, at your fingertips.

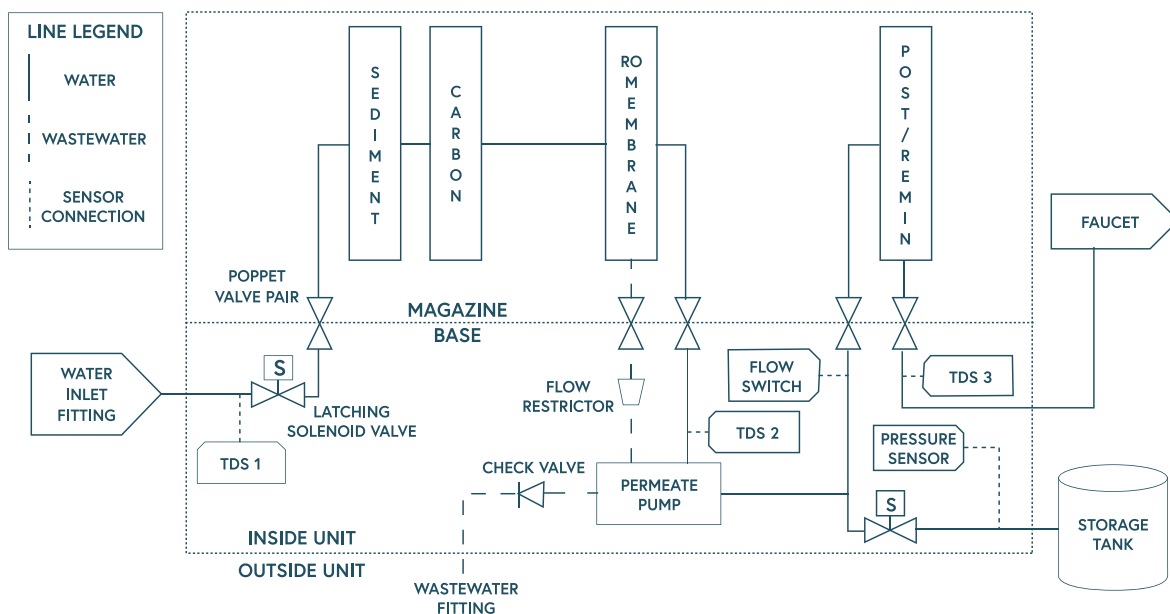


System Status	System Status Filter Status	Full system status and individual filter status reported dynamically based on water quality.
Quality Tracking	Inlet TDS Sensor Post RO TDS Sensor Post Remin TDS Sensor	TDS monitors track quality at each stage of filtration to confirm the water is being purified effectively and minerals added.
Consumption	Gallons Monthly & All-Time Customizable Household Metrics Water Bottles Saved	Water passed through the system is tracked and reported as gallons consumed. Customizable metrics allow household targets and goals.
Tank Volume	Expressed in percent and ounces	Always know how much water you have on-demand.
Tank Pressure	Expressed in PSI	Check your tank pressure and max tank pressure at anytime.
Toxin Data	SimpleLab	Toxins in your zip code as reported by SimpleLab. Third party data partner that provides both government and first party testing data.
Battery	Expressed in percent and voltage	Live battery health tracking

Additional Features

Installation	30 min install	Easiest system on the market to install. Modular design allows you to install the base separately, giving you more space to work.
Dimension	Unit: 10.85" D x 7.24" W x 15.8" H Tank: 11.3" D x 8.75" W x 15.67" H	Small tank size saves under sink space. The system and tank are designed to fit front to back in a standard under sink cabinet.
Maintenance/ Technician App	In app service screen available for technicians.	Monitor client water on-site to confirm system function without any additional tools.
Remote Monitoring	Cloud monitored	Database of water quality data with visibility into each device.
Faucet	Stainless steel Lead free	Multiple colors & finishes available.
Accessories	All fittings pre-installed	Pressure regulator included to prevent water hammer. Stainless Steel Supply Valve. All quick connect fittings.
System Life	Long system life	Cloud RO has a projected 10 year lifespan and 1-year money back satisfaction guarantee.

System Schematic



Still have questions or want to get in touch? Reach out to us at support@cloudwaterfilters.com

Model	Operating Pressure	Recovery Rating	Daily Production Rate	Pre/Post Filter Capacity
Cloud RO	40-120PSI	50% (1:1)	50 GPD	5000 L

The above referenced system has been tested by SGS Laboratories according to the NSF/ANSI 42, 53, and 58 standards for reduction of the substances listed below. The concentration of the indicated substances in water entering the system was reduced to a concentration less than or equal to the permissible limit for water leaving the system, as specified by NSF/ANSI.

NSF/ANSI 42							
	Test Items	Units	Influent Water/ Challenge	Effluent Water/ Filtered	Removal Rate (%)	Maximum Concentration Level (mg/L)	Pass/Fail
1	Chlorine	mg/L	1.89	<0.01	>99.47%	>50%	Pass
2	Chloramine	mg/L	3.19	<0.01	>99.7%	0.5	Pass
3	Free Particles	units/L	50500	11	100.0%	>85%	Pass

NSF/ANSI 53							
	Test Items	Units	Influent Water/ Challenge	Effluent Water/ Filtered	Removal Rate (%)	Maximum Concentration Level (mg/L)	Pass/Fail
1	Turbidity	NTU	11.7	0.1	99.1%	0.5 (NTU)	Pass
2	Lead (pH 8.5)	mg/L	0.0608	<0.0002	>99.67%	0.005	Pass
3	Lead (pH 6.5)	mg/L	0.0297	<0.0002	>99.32%	0.005	Pass
4	Mercury (pH 8.5)	mg/L	0.0062	<0.0002	>96.77%	0.002	Pass
5	Mercury (pH 6.5)	mg/L	0.0064	<0.0002	>96.87%	0.002	Pass
6	VOCs (as Chloroform)	mg/L	0.2831	<0.0002	>99.92%	>95%	Pass
7	Perfluorooctane Sulfonate (PFOS)	µg/L	0.6	<0.01	>98.83%	0.07	Pass
8	Perfluorooctanoic acid (PFOA)	µg/L	0.64	<0.01	>98.43%	0.07	Pass

NSF/ANSI 58							
	Test Items	Units	Influent Water/ Challenge	Effluent Water/ Filtered	Removal Rate (%)	Maximum Concentration Level (mg/L)	Pass/Fail
1	Turbidity	NTU	11.7	0.1	99.1%	0.5	Pass
2	Total Dissolved Solids (TDS)	mg/L	789	27	96.6%	187	Pass
3	Chromium-VI	mg/L	0.301	<0.004	>98.7%	0.1	Pass
4	Arsenic (As)	mg/L	0.3895	0.0002	99.9%	0.01	Pass
5	Cadmium (Cd)	mg/L	0.0358	<0.0002	>99.4%	0.005	Pass
6	Chromium (Cr)	mg/L	0.312	<0.001	>99.7%	0.1	Pass
7	Lead (Pb)	mg/L	0.1582	<0.0002	>99.9%	0.005	Pass
8	Barium (Ba)	mg/L	10.521	<0.005	>99.9%	2.0	Pass
9	Selenium (Se)	mg/L	0.129	<0.001	>99.2%	0.05	Pass
10	Copper (Cu)	mg/L	3.148	<0.005	>99.8%	1.3	Pass
11	Nitrate (as N)	mg/L	29.409	0.923	96.9%	10.0	Pass
12	Nitrite (as N)	mg/L	2.973	0.038	98.7%	1.0	Pass
13	Fluoride	mg/L	7.92	0.04	99.5%	1.5	Pass

SGS-CSTC Standards Technical Services Co., Ltd. Ningbo Branch



Unless otherwise agreed in writing, this document is issued by the Company subject to its General Conditions of Service printed overleaf, available on request or accessible at <http://www.sgs.com/en/Terms-and-Conditions.aspx> and, for electronic format documents, subject to Terms and Conditions for Electronic Documents at <http://www.sgs.com/en/Terms-and-Conditions/Terms-e-Documents.aspx>. Attention is drawn to the limitation of liability, indemnification and jurisdiction issues defined therein. Any holder of this document is advised that information contained hereon reflects the Company's findings at the time of its intervention only and within the limits of Client's instructions, if any. The Company's sole responsibility is to its Client and this document does not exonerate parties to a transaction from exercising all their rights and obligations under the transaction documents. This document cannot be reproduced except in full, without prior written approval of the Company. Any unauthorized alteration, forgery or falsification of the content or appearance of this document is unlawful and offenders may be prosecuted to the fullest extent of the law. Unless otherwise stated the results shown in this test report refer only to the sample(s) tested.

Attention: To check the authenticity of testing / inspection report & certificate, please contact us at telephone: (86-755) 8307 1443, or email: CN.Doccheck@sgs.com

SGS-CSTC Standards Technical Services Co., Ltd.
Ningbo Branch Agricultural and Food Laboratory

NO.3, NO.4 Building Lingyun Industry Park, No.1177 Lingyun Road, Ningbo National Hi-Tech Zone, Ningbo, China 315040 t 400 - 691 - 0488 f (86-574) 8752 9318 www.sgs.com.cn
中国·浙江·宁波市国家高新区凌云路1177号凌云产业园3号楼, 4号楼 邮编: 315040 t 400 - 691 - 0488 f (86-574) 8752 9318 e sgs.china@sgs.com